

Prepared for:

Willy Nilly

abc Oil & Gas Co. Ltd.
1234, 567–8th Avenue SW
Calgary, Alberta, T2P 3Q4

abc NEBC

100/12–13–014–15W6/0

Triassic

Clean-up

October 16–18, 2004

Single Point Test

October 18–19, 2004

Prepared for:

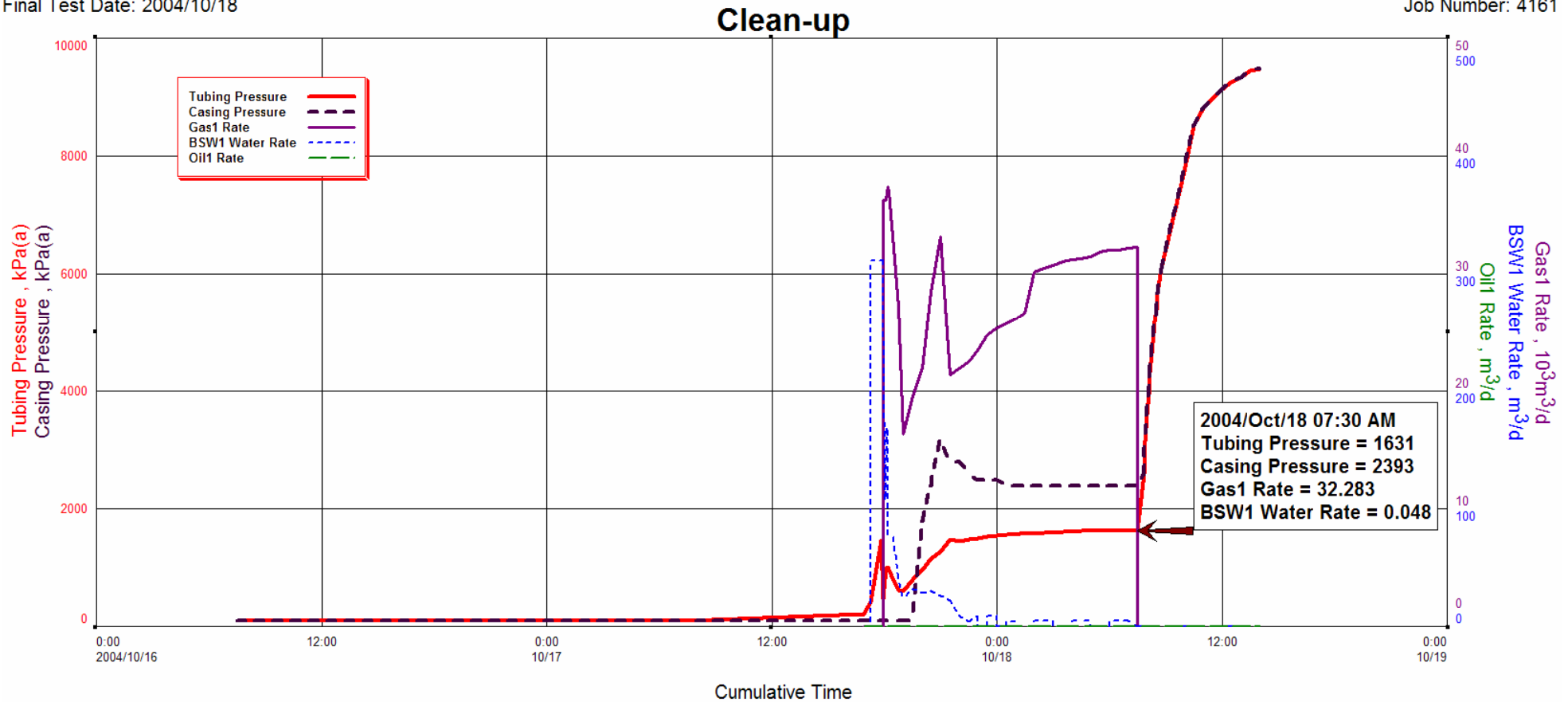
Willy Nilly

abc Oil & Gas Co. Ltd.
1234, 567–8th Avenue SW
Calgary, Alberta, T2P 3Q4

abc NEBC
100/12–13–014–15W6/0
Triassic
Clean-up
October 16–18, 2004

abc Oil & Gas Co. Ltd.
 100/12-13-014-15W6/00
 Start Test Date: 2004/10/16
 Final Test Date: 2004/10/18

abc NEBC
 Formation: Triassic
 Pool: 1255.5-1260.5 mKB
 Job Number: 4161



GENERAL INFORMATION

Client Information

Company: abc Oil & Gas Co. Ltd.
Street Address: 1234, 567-8th Avenue SW
City: Calgary Province/State: Alberta
Country: Canada Postal Code: T2P 3Q4
Contact: Willy Nilly Phone: 403-654-3210
E-Mail: Fax:

Site Information

Contact: Jo Blow Phone: 250-222-3333
E-Mail: Fax:

Well Information

Well Name: abc NEBC
Operator: abc
Surface Location:
Downhole Location: 100/12-13-014-15W6/00

Test Information

Company: Arctic Energy Systems Inc.
Test Rep: Cory Young Supervisor: Shayne Berlinski
Test Type: Clean-up Test Unit: 03
Start Date: 2004/10/16 Start Time: 07:30:00
End Date: 2004/10/18 End Time: 14:00:00
Report Date: 2004/10/27 Job Number: 4161
Prepared By: Darla McQuay Qualified By: Lizzy Davies

Remarks:

WELL INFORMATION

Well Information

Well Name: abc NEBC
Operator: abc
Well Location: 100/12-13-014-15W6/00
Surface Location:
Field: NEBC
Well Type: Vertical
Pool: 1255.5–1260.5 mKB
Formation: Triassic

Perforation Type: 101 mm ERHSC, 36 g, 17 spm, 60*
Pool Datum: m
Datum Depth: mm
Producing Through: Casing Size: 139.70 mm
Elevation Referenced From: m GL
Elevation Referenced To: m KB
Offset: m

Remarks:

Production Intervals

Production Interval & MPP Reference To: KB

MPP Pressure Reference:

	From - m	To - m		Depth - m	Pressure - kPa
1	1255.50	1260.50	1	1258.00	

abc Oil & Gas Co. Ltd.
100/12-13-014-15W6/00
2004/10/16
2004/10/18

FieldNotes METER REPORT

abc NEBC
Formation: Triassic
Pool: 1255.5–1260.5 mKB
Job Number: 4161

Orifice Meter 1

Meter Type:	Orifice	Gas Gravity(G):	0.659
Meter Size:	102.26 mm	CO2:	1.40 %
Previous Gas Production:	0.000 10 ³ m ³	H2S:	1.00 %
Tap Type:	Flange	N2:	0.12 %
Tap Location:	Downstream	Critical Temperature (Tc):	209.9 K
		Critical Pressure (PC):	4676.00 kPa

Produced Volume 1

Meter Type:	Produced Volume
Measurement Type:	Cumulative
Previous Oil Production:	0.000 m ³
Previous Water Production:	0.000 m ³
Oil Gravity:	

abc Oil & Gas Co. Ltd.
 100/12-13-014-15W6/00
 Start Test Date: 2004/10/16
 Final Test Date: 2004/10/18

Arctic Energy Systems Inc.

Clean-up

abc NEBC
 Formation: Triassic
 Pool: 1255.5–1260.5 mKB
 Job Number: 4161

	Clock	Cum	Cum FloC	TBG	CSG	WHT	Chok	Static	Diff	MRT	Orific	Gas	Gas	fld	Inc	BSW	Inc	Cum.	Inc	Cum.	Cum.	
	Date	Time	Time	Pres	Pres	Size	Pres	Pres	Size	Rate	Cum	lev	Fld	%	BSW	BSW	Oil	Oil	Fluid			
	yyyy/mm/d	hh:mm:s	hr	kPa(a)	kPa(a)	°C	mm	kPa(a)	kPa	°C	mm	10 ³ m ³ /d	10 ³ m ³	m ³	m ³	%	m ³	m ³	m ³	m ³		
1	2004/10/16	07:30:00	0.000																			
				Arrive on location,safety meeting,spot & rig in test equipment.																		
2		18:30:00	11.000																			
				Released till morning.																		
3	2004/10/17	07:30:00	24.000																			
				Arrive on location,safety meeting,continue drilling out bridge plug through rig tank.																		
4		11:30:00	28.000																			
				Bridge plug drilled out,rig up to trip tubing out of hole.																		
5		14:00:00	30.500																			
				Tubing out of hole,run in with scraper.																		
6		15:55:00	32.417																			
				Tubing out of hole.																		
7		16:00:00	32.500																			
				Start rigging off b.o.p.s & install wellhead.prepare to swab.																		
8		16:55:00	33.417					93	0.00	0	0.00	0.000	0.000	0.00	0.00		0.00	0.000	0.00	0.000	0.000	
				Swab#1=tag@surface,pull@446m.,sal.=32,000ppm. ph=11,fluid gain=1.08m3																		
10		16:55:00	33.417	213	93	50.80																
				Swab#2=tag@71m.,pull@1134m.,sal.=49,000ppm., ph=12,fluid gain=1.62m3																		
12		17:15:00	33.750																			
				Recovered 2.70m3 while swabbing.																		
13		17:15:00	33.750	418	93	50.80								0.00	0.00		0.00	0.000	0.00	0.000	0.000	
				Well flowing on it's own.																		
15		17:45:00	34.250	0.500																		
				Open well on 32/64,(12.70mm.)adjustable choke.																		
16		17:50:00	34.333	0.583	1468	93	12.70															
17		17:55:00	34.417	0.667	468	93	12.70	93	0.00	0	0.00	0.000	0.000	8.64	8.64	100	8.64	8.640	0.00	0.000	8.640	
				Increase choke to 48/64,(19.05mm.)adjustable choke.																		
19		18:00:00	34.500	0.750																		
				Meter in service with a 1.50" ,(38.10mm.) orifice plate.																		
20		18:05:00	34.583	0.833	989	93	16 19.05	107	100.00	10	38.10	36.237	0.252	9.38	0.74	100	0.74	9.380	0.00	0.000	9.380	
21		18:10:00	34.667	0.917	1010	93	16 19.05	107	106.00	13	38.10	37.436	0.380	9.97	0.59	100	0.59	9.970	0.00	0.000	9.970	
22		18:15:00	34.750	1.000	955	93	17 19.05	107	104.00	13	38.10	36.974	0.509	10.23	0.26	100	0.26	10.230	0.00	0.000	10.230	
23		18:30:00	35.000	1.250	783	93	18 19.05	107	84.00	14	38.10	32.199	0.869	11.02	0.79	100	0.79	11.020	0.00	0.000	11.020	
				Salinity = 50,000ppm., ph= 11																		
25		18:45:00	35.250	1.500	610	93	16 19.05	107	64.00	15	38.10	27.198	1.178	11.48	0.46	100	0.46	11.480	0.00	0.000	11.480	
				Decrease adjustable choke to 32/64,(12.70mm.)																		
27		19:00:00	35.500	1.750	603	93	14 12.70	107	26.00	14	38.10	16.317	1.405	11.72	0.24	100	0.24	11.720	0.00	0.000	11.720	
				Salinity= 52,000ppm. ph=11																		
29		19:30:00	36.000	2.250	796	93	10 12.70	100	38.00	12	38.10	19.610	1.779	12.38	0.66	100	0.66	12.380	0.00	0.000	12.380	
				Gastec pulled = 1.0% sour																		
31		20:00:00	36.500	2.750	955	1793	10 12.70	107	44.00	11	38.10	21.988	2.213	12.98	0.60	100	0.60	12.980	0.00	0.000	12.980	
				Salinity = 50,000ppm.,ph=8																		
33		20:30:00	37.000	3.250	1162	2393	10 12.70	107	68.00	10		28.463	2.738	13.60	0.62	100	0.62	13.600	0.00	0.000	13.600	
34		21:00:00	37.500	3.750	1265	3193	10 12.70	110	86.00	11	38.10	33.193	3.380	14.14	0.54	100	0.54	14.140	0.00	0.000	14.140	
				Salinity = 46,000ppm.,ph=9, 1% emulsion in sample.																		
36		21:30:00	38.000	4.250	1472	2793	7 12.70	121	37.82	8		21.387	3.949	14.60	0.46	100	0.46	14.600	0.00	0.000	14.600	
37		22:00:00	38.500	4.750	1444	2793	6 12.70	121	39.57	7	38.10	21.970	4.401	14.78	0.18	100	0.18	14.784	0.00	0.000	14.784	
38		22:00:00	38.500	4.750																		
				Salinity = 54,000 ppm ph=8																		



abc Oil & Gas Co. Ltd.
 100/12-13-014-15W6/00
 Start Test Date: 2004/10/16
 Final Test Date: 2004/10/18

Arctic Energy Systems Inc. Clean-up

abc NEBC
 Formation: Triassic
 Pool: 1255.5–1260.5 mKB
 Job Number: 4161

	Clock	Cum	Cum FloC	TBG	CSG	WHT	Chok	Static	Diff	MRT	Orific	Gas	Gas	fld	Inc	BSW	Inc	Cum.	Inc	Cum.	Cum.	
	Date	Time	Time	Pres	Pres	Size	Pres	Pres	Size	Rate	Cum	lev	Fld	BSW	BSW	BSW	Oil	Oil	Oil	Fluid		
	yyyy/mm/d	hh:mm:s	hr	kPa(a)	kPa(a)	°C	mm	kPa(a)	kPa	°C	mm	10 ³ m ³ /d	10 ³ m ³	m ³	m ³	%	m ³	m ³	m ³	m ³		
39	2004/10/17	22:30:00	39.000	5.250	1479	2593	6	12.70	121	41.31	6		22.547	4.864	14.88	0.09	100	0.09	14.877	0.00	0.000	14.877
40		23:00:00	39.500	5.750	1493	2493	6	12.70	127	42.55	6	38.10	23.494	5.344	15.06	0.19	99	0.19	15.062	0.00	0.002	15.064
41		23:00:00	39.500	5.750	Salinity = 50,000 ppm ph-8 1% oil																	
42		23:30:00	40.000	6.250	1534	2493	7	12.70	134	44.54	3	38.10	24.806	5.847	15.06	0.00		0.00	15.062	0.00	0.002	15.064
43	2004/10/18	00:00:00	40.500	6.750	1541	2493	7	12.70	134	46.28	3	38.10	25.345	6.369	15.25	0.19	99	0.19	15.247	0.00	0.004	15.251
44		00:00:00	40.500	6.750	Salinity = 50,000 ppm ph-8 1% oil H2s - 1.1% or 11,000 ppm																	
45		00:30:00	41.000	7.250	1568	2393	7	12.70	134	47.53	2	38.10	25.773	6.902	15.25	0.00		0.00	15.247	0.00	0.004	15.251
46		01:00:00	41.500	7.750	1569	2393	7	12.70	134	48.77	2	38.10	26.151	7.443	15.34	0.09	99	0.09	15.340	0.00	0.005	15.345
47		01:00:00	41.500	7.750	Salinity = 50,000 ppm ph-8 1% oil																	
48		01:30:00	42.000	8.250	1596	2393	7	12.70	134	50.52	2	38.10	26.675	7.993	15.34	0.00		0.00	15.340	0.00	0.005	15.345
49		02:00:00	42.500	8.750	1575	2393	7	12.70	134	62.46	2	38.10	30.129	8.585	15.34	0.00		0.00	15.340	0.00	0.005	15.345
50		02:00:00	42.500	8.750	Salinity = 50,000 ppm ph-8 1% oil																	
51		02:30:00	43.000	9.250	1596	2393	6	12.70	134	63.45	1	38.10	30.463	9.216	15.44	0.09	99	0.09	15.434	0.00	0.006	15.440
52		03:00:00	43.500	9.750	1596	2393	5	12.70	134	64.45	1	38.10	30.741	9.853	15.53	0.09	99	0.09	15.527	0.00	0.007	15.534
53		03:00:00	43.500	9.750	Salinity = 50,000 ppm ph-8 1% oil																	
54		03:30:00	44.000	10.250	1610	2393	5	12.70	134	65.45	1	38.10	31.018	10.497	15.53	0.00		0.00	15.527	0.00	0.007	15.534
55		04:00:00	44.500	10.750	1617	2393	5	12.70	134	66.19	1	38.10	31.224	11.145	15.53	0.00		0.00	15.527	0.00	0.007	15.534
56		04:00:00	44.500	10.750	Salinity = 55,000 ppm ph-8 1% oil																	
57		04:30:00	45.000	11.250	1624	2393	5	12.70	134	66.44	1	38.10	31.293	11.796	15.63	0.09	99	0.09	15.621	0.00	0.008	15.629
58		05:00:00	45.500	11.750	1624	2393	6	12.70	134	67.19	1	38.10	31.498	12.450	15.72	0.09	100	0.09	15.715	0.00	0.008	15.723
59		05:00:00	45.500	11.750	Salinity = 52,000 ppm ph-8 Trace of oil																	
60		05:30:00	46.000	12.250	1630	2393	7	12.70	134	68.43	0	38.10	31.899	13.111	15.72	0.00		0.00	15.715	0.00	0.008	15.723
61		06:00:00	46.500	12.750	1624	2393	7	12.70	134	68.93	0	38.10	32.035	13.777	15.72	0.00		0.00	15.715	0.00	0.008	15.723
62		06:00:00	46.500	12.750	Salinity = 50,000 ppm ph-8 H2s = 1.1%																	
63					Gas produced last 24 hrs - 13.365 10 ³ m ³																	
64					Cumm gas produced - 13.365 10 ³ m ³																	
65					Water produced last 24 hrs - 15.715 m ³																	
66					Cumm water produced - 15.715 m ³																	
67					Oil produced last 24hrs - 0.008 m ³																	
68					Cumm oil produced - 0.008 m ³																	
69					Fluid produced last 24 hrs - 15.723 m ³																	
70					Cumm fluid produced - 15.723 m ³																	
71					Load fluid to recover - 14.63 m ³																	
72					Load fluid recovered - 14.63 m ³																	
73					Fluid recovered over load - 1.085 m ³																	
74		06:30:00	47.000	13.250	1638	2393	7	12.70	134	68.93	0	38.10	31.999	14.444	15.82	0.10	100	0.10	15.812	0.00	0.008	15.820
75		07:00:00	47.500	13.750	1630	2393	7	12.70	134	69.50	0	38.10	32.155	15.112	15.82	-0.00		-0.00	15.812	0.00	0.008	15.820
76		07:30:00	48.000	14.250	1631	2393	7	12.70	134	69.97	0	38.10	32.283	15.783	15.82	0.00		0.00	15.814	0.00	0.008	15.822

abc Oil & Gas Co. Ltd.
 100/12-13-014-15W6/00
 Start Test Date: 2004/10/16
 Final Test Date: 2004/10/18

Arctic Energy Systems Inc. Clean-up

abc NEBC
 Formation: Triassic
 Pool: 1255.5–1260.5 mKB
 Job Number: 4161

Date	Clock Time	Cum Time	Cum Flo	TBG Pres	CSG Pres	WHT °C	Chok Size	Static Pres	Diff Pres	MRT °C	Orific Size	Gas Rate	Gas Cum	fld lev	Inc Fld	BSW %	Inc BSW	Cum. BSW	Inc Oil	Cum. Oil	Cum. Fluid	
yyyy/mm/d	hh:mm:s	hr	hr	kPa(a)	kPa(a)	°C	mm	kPa(a)	kPa	°C	mm	10 ³ m ³ /d	10 ³ m ³	m ³	m ³	%	m ³	m ³	m ³	m ³	m ³	
77	2004/10/18	07:45:00	48.250																			
				Shut in tubing wing valve, proceed with build-up's as directed.																		
78		07:45:00	48.250					93	0.00	0	0.00	0.000	15.783									
79		07:50:00	48.333		2596	2596																
80		07:55:00	48.417		3161	3161																
81		08:00:00	48.500		3603	3603																
82		08:05:00	48.583		3954	3954																
83		08:10:00	48.667		4333	4333																
84		08:15:00	48.750		4643	4643																
85		08:20:00	48.833		4988	4988																
86		08:25:00	48.917		5195	5195																
87		08:30:00	49.000		5402	5402																
88		08:35:00	49.083		5678	5678																
89		08:40:00	49.167		5885	5885																
90		08:45:00	49.250		6093	6093																
91		08:45:00	49.250	Wireline on location, to set recorders.																		
92		09:00:00	49.500	Wireline set recorders @ 1248.5m.																		
93		09:47:00	50.283	Wireline out of hole, released.																		
94		10:00:00	50.500	Continue with build-up's as directed, re-open on test @ 14:00pm.																		
95		10:00:00	50.500		7746	7746																
96		10:30:00	51.000		8519	8519																
97		11:00:00	51.500		8815	8815																
98		11:30:00	52.000		8974	8974																
99		12:00:00	52.500		9132	9132																
100		12:30:00	53.000		9250	9250																
101		13:00:00	53.500		9332	9332																
102		13:30:00	54.000		9450	9450																
103		14:00:00	54.500		9484	9484																
104		14:00:00	54.500	Switch over to new file, for single point test, as directed																		



*e*REPORT



Prepared for:

Willy Nilly

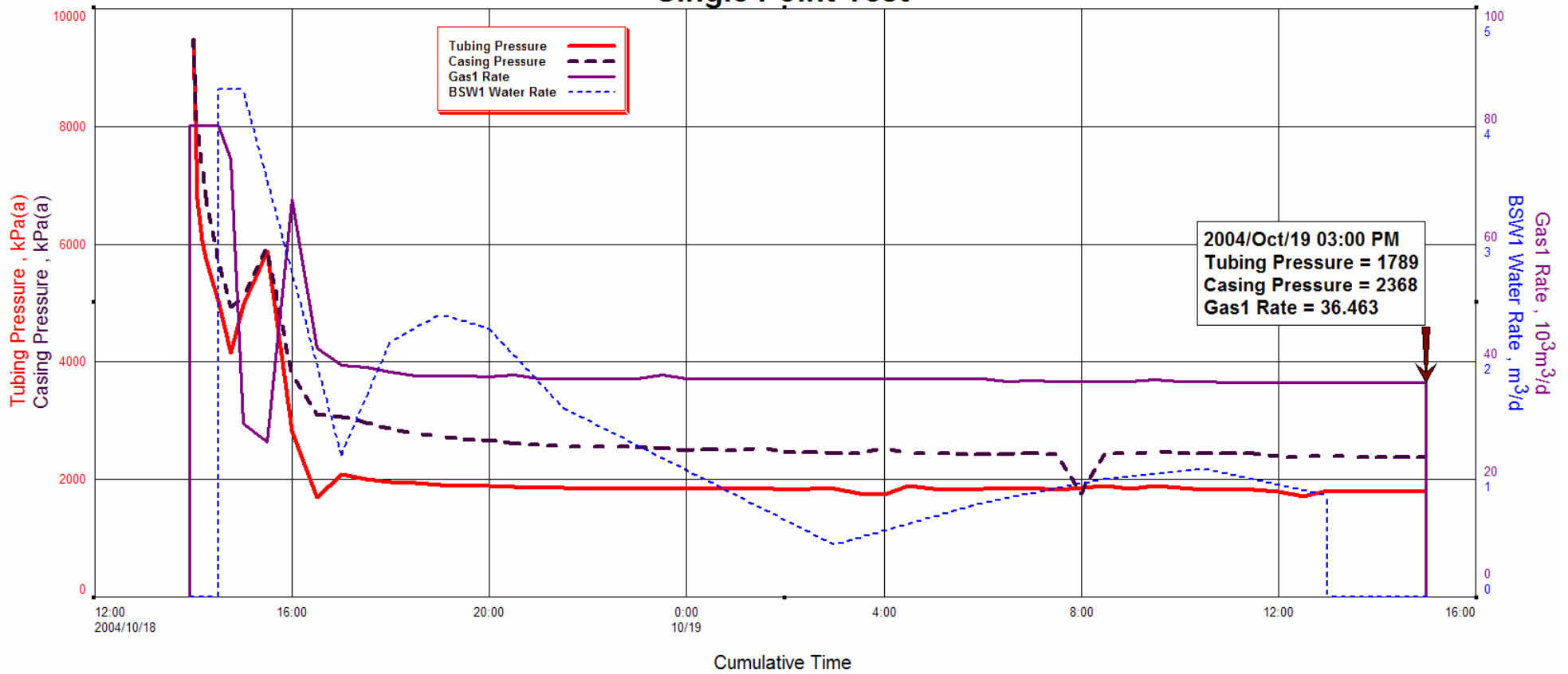
abc Oil & Gas Co. Ltd.
1234, 567–8th Avenue SW
Calgary, Alberta, T2P 3Q4

abc NEBC
100/12–13–014–15W6/0
Triassic
Single Point Test
October 18–19, 2004

abc Oil & gas Co. Ltd.
 100/12-13-014-15W6/00
 Start Test Date: 2004/10/18
 Final Test Date: 2004/10/19

abc NEBC
 Formation: Triassic
 Pool: 1255.5-1260-5 mKB
 Job Number: 4161

Single Point Test



GENERAL INFORMATION

Client Information

Company: abc Oil & gas Co. Ltd.
Street Address: 1234, 567-8th Avenue SW
City: Calgary Province/State: Alberta
Country: Canada Postal Code: T2P 3Q4
Contact: Willy Nilly Phone: 403-655-3210
E-Mail: Fax:

Site Information

Contact: Jo Blow Phone: 250-222-3333
E-Mail: Fax:

Well Information

Well Name: abc NEBC
Operator: abc
Surface Location:
Downhole Location: 100/12-13-014-15W6/00

Test Information

Company: Arctic Energy Systems Inc.
Test Rep: Cory Young Supervisor: Shayne Berlinski
Test Type: Single Point Test Test Unit: 03
Start Date: 2004/10/18 Start Time: 13:55:00
End Date: 2004/10/19 End Time: 15:00:00
Report Date: 2004/10/27 Job Number: 4161
Prepared By: Darla McQuay Qualified By: Lizzy Davies

Remarks:

File #2

WELL INFORMATION

Well Information

Well Name: abc NEBC
Operator: abc
Well Location: 100/12-13-014-15W6/00
Surface Location:
Field: NEBC
Well Type: Vertical
Pool: 1255.5–1260-5 mKB
Formation: Triassic

Perforation Type: 101 mm ERHSC, 39 g, 17 spm, 60*
Pool Datum: m
Datum Depth: mm
Producing Through: Casing Size: 139.70 mm
Elevation Referenced From: m GL
Elevation Referenced To: m KB
Offset: m

Remarks:

Production Intervals

Production Interval & MPP Reference To: KB

MPP Pressure Reference:

	From - m	To - m		Depth - m	Pressure - kPa
1	1255.50	1260.50	1	1258.00	

abc Oil & gas Co. Ltd.
100/12-13-014-15W6/00
2004/10/18
2004/10/19

FieldNotes METER REPORT

abc NEBC
Formation: Triassic
Pool: 1255.5-1260-5 mKB
Job Number: 4161

Orifice Meter 1

Meter Type:	Orifice	Gas Gravity(G):	0.659
Meter Size:	102.26 mm	CO2:	1.40 %
Previous Gas Production:	0.000 10 ³ m ³	H2S:	1.00 %
Tap Type:	Flange	N2:	0.12 %
Tap Location:	Downstream	Critical Temperature (Tc):	209.9 K
		Critical Pressure (PC):	4676.00 kPa

Produced Volume 1

Meter Type:	Produced Volume
Measurement Type:	Cumulative
Previous Oil Production:	0.000 m ³
Previous Water Production:	0.000 m ³
Oil Gravity:	

abc Oil & gas Co. Ltd.
 100/12-13-014-15W6/00
 Start Test Date: 2004/10/18
 Final Test Date: 2004/10/19

Arctic Energy Systems Inc.

Single Point Test

abc NEBC
 Formation: Triassic
 Pool: 1255.5-1260-5 mKB
 Job Number: 4161

	Clock	Cum	Cum FloC	TBG	CSG	WHT	Chok	Static	Diff	MRT	Orific	Gas	Gas	fld	Inc	BSW	Inc	Cum.	Inc	Cum.	Cum.	
	Date	Time	Time	Pres	Pres	Size	Pres	Pres	Size	Rate	Cum	lev	Fld	%	BSW	BSW	Oil	Oil	Fluid			
	yyyy/mm/d	hh:mm:s	hr	kPa(a)	kPa(a)	°C	mm	kPa(a)	kPa	°C	mm	10 ³ m ³ /d	10 ³ m ³	m ³	m ³	%	m ³	m ³	m ³	m ³		
39	2004/10/19	02:00:00	12.083	12.083	1824	2451	6	12.70	176	23.89	-3	50.80	37.040	20.889								
40		02:30:00	12.583	12.583	1837	2451	5		176	23.89	-3		37.040	21.660								
41		03:00:00	13.083	13.083	1844	2444	6	12.70	176	23.89	-3	50.80	37.040	22.432	0.68	0.10	100	0.10	0.676	0.00	0.000	0.676
42		03:00:00	13.083	13.083	Salinity = 54,000ppm., ph = 8																	
43		03:30:00	13.583	13.583	1755	2444	6		176	23.89	-3		37.040	23.204								
44		04:00:00	14.083	14.083	1748	2527	6	12.70	176	23.89	-3	50.80	37.040	23.975								
45		04:30:00	14.583	14.583	1886	2444	6		176	23.89	-3		37.040	24.747								
46		05:00:00	15.083	15.083	1837	2437	7	12.70	176	23.89	-3	50.80	37.040	25.519								
47		05:30:00	15.583	15.583	1817	2417	7		176	23.89	-3		37.040	26.290								
48		06:00:00	16.083	16.083	1837	2417	6	12.70	176	23.89	-3	50.80	37.040	27.062	0.78	0.10	100	0.10	0.776	0.00	0.000	0.776
49		06:00:00	16.083	16.083	Salinity= 52,000ppm. ph = 8																	
50		06:00:00	16.083	16.083	TOTAL CUMM FLUID PRODUCED =0.78 m ³																	
51		06:00:00	16.083	16.083	TOTAL CUMM GAS FLARED IN LAST 16 hrs = 26.250 10 ³ m ³																	
52		06:00:00	16.083	16.083	GAS RATE = 35.931 10 ³ m ³																	
53		06:00:00	16.083	16.083	H2S= 1.2%																	
54		06:30:00	16.583	16.583	1837	2417	6		176	23.39	-3		36.635	27.829								
55		07:00:00	17.083	17.083	1858	2437	4	12.70	176	23.40	-3	50.80	36.668	28.593								
56		07:30:00	17.583	17.583	1817	2410	2		176	23.40	-2		36.599	29.356								
57		08:00:00	18.083	18.083	1851	1748	8	12.70	176	23.40	-2	50.80	36.599	30.119								
58		08:30:00	18.583	18.583	1886	2437	8		176	23.40	-1		36.531	30.881	0.88	0.10	100	0.10	0.880	0.00	0.000	0.880
59		09:00:00	19.083	19.083	1844	2424	9	12.70	176	23.40	-1	50.80	36.531	31.642								
60		09:30:00	19.583	19.583	1886	2465	8		176	23.90	-1		36.937	32.407								
61		10:00:00	20.083	20.083	1851	2437	10	12.70	176	23.40	-1	50.80	36.531	33.172								
62		10:30:00	20.583	20.583	1817	2437	10		176	23.40	-1		36.531	33.933	0.97	0.09	100	0.09	0.970	0.00	0.000	0.970
63		11:00:00	21.083	21.083	1817	2437	14	12.70	176	23.40	0	50.80	36.463	34.694								
64		11:30:00	21.583	21.583	1817	2437	12		176	23.40	0		36.463	35.453								
65		12:00:00	22.083	22.083	1789	2368	14	12.70	176	23.40	0	50.80	36.463	36.213								
66		12:00:00	22.083	22.083	Gas samples taken,,,#00020762,#00019231, not enough fluid for fluid samples.																	
67		12:30:00	22.583	22.583	1713	2368	12		176	23.40	0		36.463	36.973								
68		13:00:00	23.083	23.083	1810	2389	12	12.70	176	23.40	0	50.80	36.463	37.732	1.06	0.09	100	0.09	1.060	0.00	0.000	1.060
69		13:30:00	23.583	23.583	1789	2368	12		176	23.40	0		36.463	38.492								
70		14:00:00	24.083	24.083	1789	2368	12	12.70	176	23.40	0	50.80	36.463	39.251								
71		14:30:00	24.583	24.583	1789	2368	8		176	23.40	0		36.463	40.011								
72		15:00:00	25.083	25.083	1789	2368	8	12.70	176	23.40	0	50.80	36.463	40.771								
73		15:00:00	25.083		Shut in well,rig out test equipment.																	
74		15:00:00	25.083						93	0.00	0	0.00	0.000	40.771								
75					Cumm. gas flared during test,in 25 hrs. = 39.55 ,10 3m3																	
76					Total water produced during test = 1.06 m3																	



abc Oil & gas Co. Ltd.
 100/12-13-014-15W6/00
 Start Test Date: 2004/10/18
 Final Test Date: 2004/10/19

Arctic Energy Systems Inc.

Single Point Test

abc NEBC
 Formation: Triassic
 Pool: 1255.5-1260-5 mKB
 Job Number: 4161

	Clock	Cum	Cum Flo	C TBG	CSG	WHT	Chok	Static	Diff	MRT	Orific	Gas	Gas	fld	Inc	BSW	Inc	Cum.	Inc	Cum.	Cum.
	Date	Time	Time	Pres	Pres	Size	Pres	Pres	Pres	Size	Rate	Cum	lev	Fld	BSW	BSW	Oil	Oil	Oil	Fluid	
	yyyy/mm/d	hh:mm:s	hr	kPa(a)	kPa(a)	°C	mm	kPa(a)	kPa	°C	mm	10 ³ m ³ /d	10 ³ m ³	m ³	m ³	%	m ³	m ³	m ³	m ³	
77	2004/10/19																				Traces of oil produced,t.s.t.m.
78		15:00:00	25.083																		H2S = 1.2 %



Container Identification AGAT 20		Laboratory Number	
Operator Name			
Unique Well Identifier		Well Name	
		KB m	GRD m
Field or Area		Pool or Zone	
		Sampler's Company ARTIC ENERGY SYSTEMS	
Test Type	Test No.	Test Recovery	
Test Interval or Perfs		Sampling Point	
1255.50-1260.50		METER RUN	
mKB		Separator	Reservoir
		Pressure (kPa)	Source
		Temperature	Sampled
			Received
Date Sampled	Date Received	Date Reported	Entered By
Oct 19, 2004	Oct 21, 2004	Oct 29, 2004	
Certified By			
Other Information			
H2S: FIELD = 1.00%, LAB = 0.21%			

COMP	MOLE FRACTION		PETROLEUM LIQUID mL / m ³
	AIR FREE AS RECEIVED	AIR FREE ACID GAS FREE	
H2	TRACE	TRACE	
He	0.0002	0.0002	
N2	0.0012	0.0012	
CO2	0.0140	0.0000	
H2S	0.0100	0.0000	
C1	0.8693	0.8908	
C2	0.0665	0.0681	
C3	0.0222	0.0227	81.5
IC4	0.0025	0.0026	10.9
NC4	0.0065	0.0067	27.4
IC5	0.0019	0.0019	9.3
NC5	0.0021	0.0022	10.2
C6	0.0018	0.0018	9.9
C7+	0.0018	0.0018	11.7
Total	1.0000	1.0000	160.9

GROSS HEATING VALUE MJ/m³
15° C AND 101.325 kPa

Air Free As Received	Moisture & Acid Gas Free	C7+, Air Free As Received
42.03	42.80	0.39

RELATIVE DENSITY (CALCULATED)

Moisture Free	Moisture & Acid Gas Free	C7+, Moisture Free	C7+, Portion Whole Density
0.659	0.641	3.675	0.007

PSEUDO CRITICAL PROPERTIES (CALCULATED)

As Sampled		Acid Gas Free	
pPc (abs) kPa	pTc K	pPc (abs) kPa	pTc K
4676	209.9	4593	206.8

RELATIVE MOLECULAR MASS

Total Gas	C7+
19.1	106.4

VAPOUR PRESSURE (Pentanes +)

74.87 kPa

H2S g/m³

14.39



