



*e*REPORT



Prepared for:

Willy Nilly

abc Oil & Gas Co. Ltd.
1234, 567-8th Avenue sw
Calgary, Alberta, T2P 3Q4

Abc Hz Hicksville

100/10-20-080-02W6/0

Montney

Dynamometer & Acoustic Well Sounder

Dec 9, 2005

Pump Card

Upstroke exhibits cyclic overweighting indicative of repeated sticking (bounce), friction, acceleration or flow line restriction.

Downstroke exhibits slight fluid-pound (gas-lock) and cyclic underweighting indicative of plunger sticking.

Tubing Anchor slight movement suggested.

Valve Check

Traveling Valve analysis indicates effective closure.

Standing Valve analysis indicates effective closure.

Acoustic Well Sounder

Producing shot #1 fluid level = 517 m.

Producing shot #2 fluid level = 840 m, $p_{wf} = 473$ kPa.

Interpretation: foaming, essentially pumped off.

Welltest Specialists Inc.

David Leech, BTech

General

Well ID abc Hz Hickville
 Well 10-20-080-02 W6M
 Company abc Oil & Gas Co. Ltd.
 Operator Sam McGee
 Lease Name - * -
 Elevation 0 m
 Artificial Lift Type Rod Pump

Comment
 Pumping Horizontal Well

Surface Unit

Manufacturer Lufkin Mark II
 Unit Class Mark II
 Unit API Number M-160D-200-86
 Measured Stroke Length 2184.4 mm
 Rotation CCW
 Counter Balance Effect (Weights Level) 2195.58 kg
 Weight Of Counter Weights 0 kg

Prime Mover

Motor Type Gas
 Rated HP 11.936 KW
 Run Time 24 hr/day
 MFG/Comment - * -

Tubulars

Tubing OD 73.025 mm
 Casing OD 177.8 mm
 Average Joint Length 9.55102 m
 Anchor Depth 845.18 m
 Kelly Bushing 5 m

Pump

Plunger Diameter 25.4 mm
 Pump Intake Depth (MD) 845.94 m

Polished Rod

Polished Rod Diameter 38.1 mm

Rod String

	Top Taper	Taper 2	Taper 3	Taper 4	Taper 5	Taper 6
Rod Type	C	- * -	- * -	- * -	- * -	- * -
Rod Length	845.94	- * -	- * -	- * -	- * -	- * - m
Rod Diameter	19.05	- * -	- * -	- * -	- * -	- * - mm

Total Rod Length 2775

Damp Up 0.05
 Damp Down 0.05

Conditions

Pressure

Static BHP 850 kPa (g)
 Static BHP Method Estimate
 Static BHP Date 12/09/2005

Producing BHP 5.4 kPa (g)
 Producing BHP Method Acoustic
 Producing BHP Date 12/09/2005
 Formation Depth 845.94 m

Surface Producing Pressures

Tubing Pressure 149.0 kPa (g)
 Casing Pressure 0.0 kPa (g)

Casing Pressure Buildup

Change in Pressure 0.6 kPa
 Over Change in Time 1.25 min

Production

Oil Production 21 m³/D
 Water Production 0.3 m³/D
 Gas Production 104.772 m³/D
 Production Date 03/11/2004

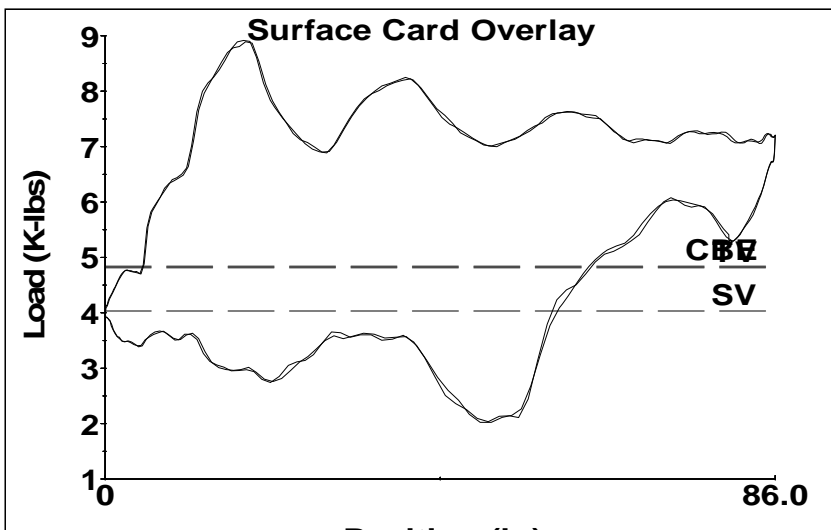
Temperatures

Surface Temperature 3 deg C
 Bottomhole Temperature 65.6 deg C

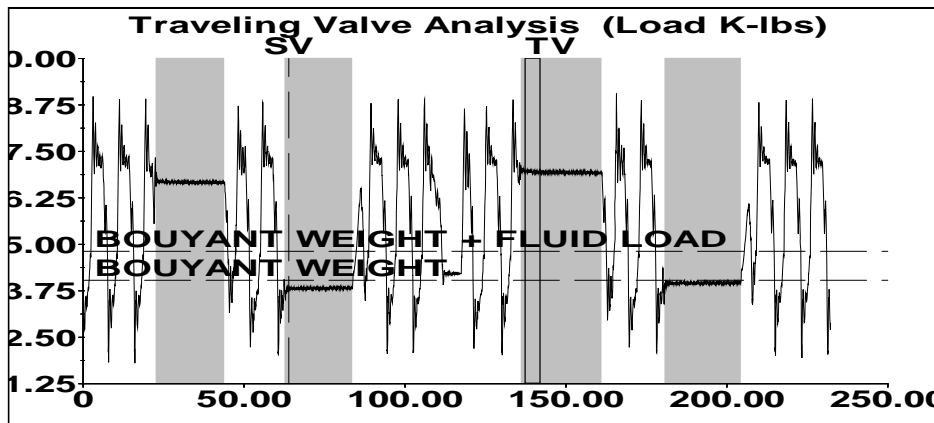
Fluid Properties

Oil API 0.825073 g/cm³
 Water Specific Gravity 1.05 Sp.Gr.H2O

Group: MyWells Well: 15-24-86-01 w6m (acquired on: 03/11/04 14:14:53) Sensor: HT741



Group: MyWells Well: 15-24-86-01 w6m (acquired on: 03/11/04 14:20:01) Sensor: HT741

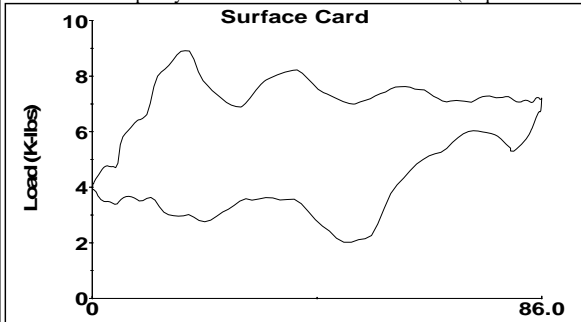


Traveling Valve Analysis

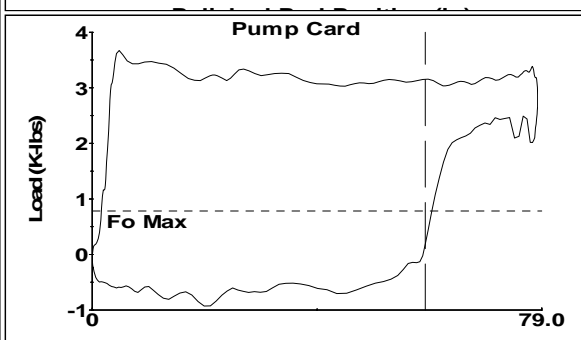
Standing Valve Analysis

Calc. Bouyant Rod Weight + Fluid Load	21406 N	Calculate Bouyant Rod Weight	17928 N
Measured Load TV	31058 N	Measured Load SV	17009 N
Leakage	0.0 m ³ /D	Intake Pressure	0.0 kPa (g)

Group: MyWells Well: 15-24-86-01 w6m (acquired on: 03/11/04 14:14:53) Sensor: HT741



PPRL	4044 kg
MPRL	917 kg
PPMPL	1664 kg
MPMPL	-421 kg
Calculated Fluid Load	355 kg
Polished Rod Power	4.0 KW
Polished Rod / Motor Eff.	- * - %
SPM	7.38
Pump Card HP	3.3 KW
Pump / Motor Eff.	- * - %
Pump Displacement	8.0 m ³ /D
Pump Intake Pressure	0.0 kPa (g)



Damp Up	0.05
Damp Down	0.05
Tubing Pressure	149.0 kPa (g)
Fillage	74.78 %

Showing stroke 1 of 6

Group: MyWells Well: 15-24-86-01 w6m (acquired on: 03/11/04 14:14:53)

Beam Loading 44.6 %

Top Rod Loading as % of Goodman for Given Grades

Service Factor	C	D	K	H
1.0	80.5	64.4	84.7	40.4
0.85	93.0	74.7	97.8	47.5
0.60	125.6	101.8	131.7	67.3

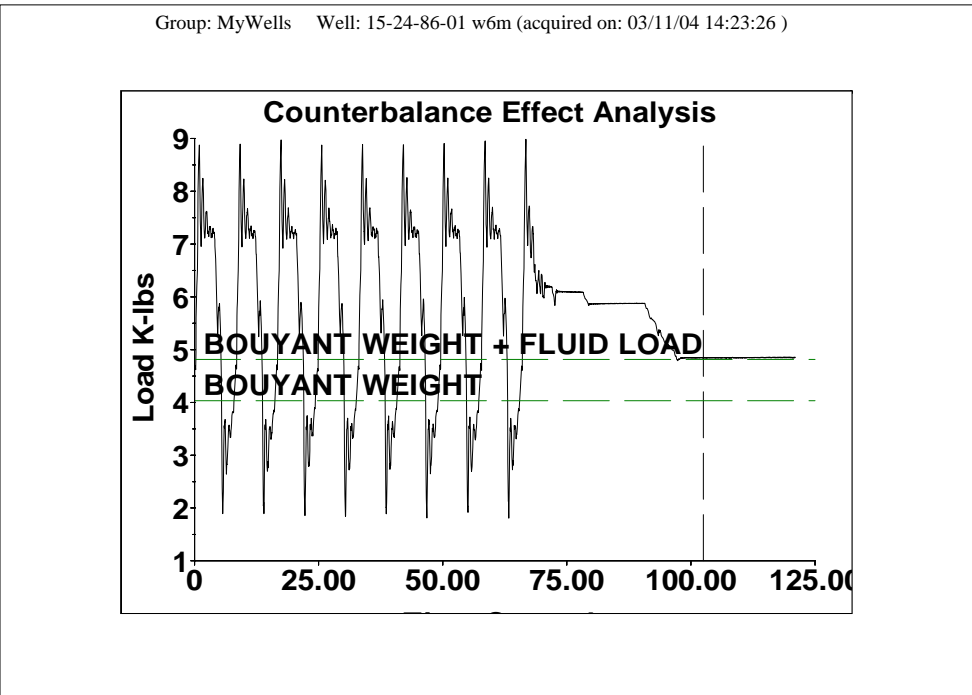
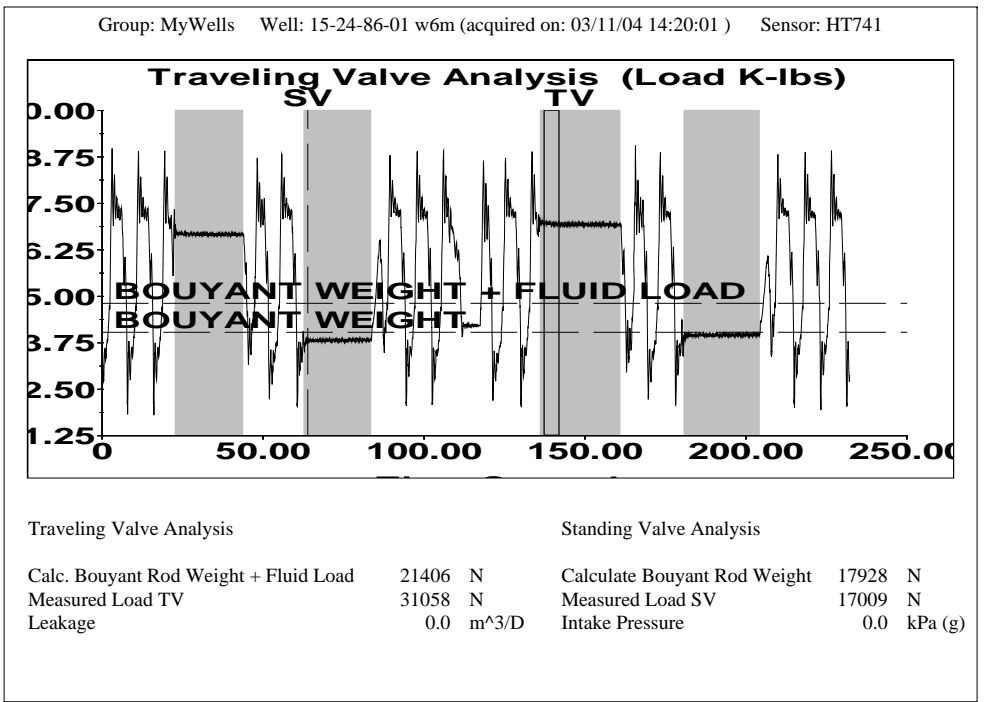
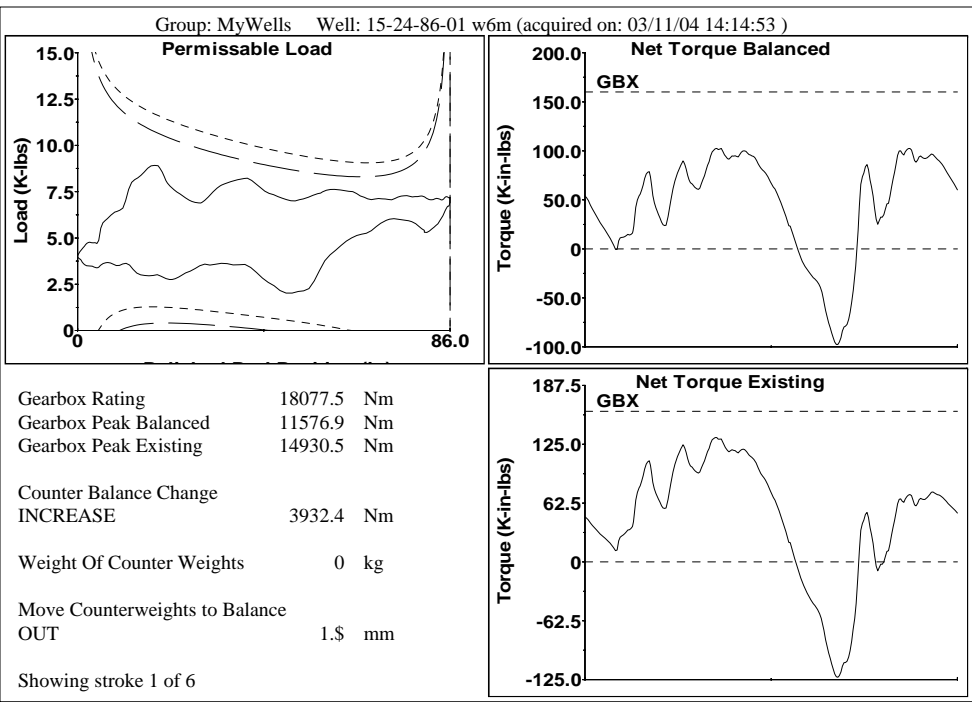
Rod Loading at Tapers as % of Goodman

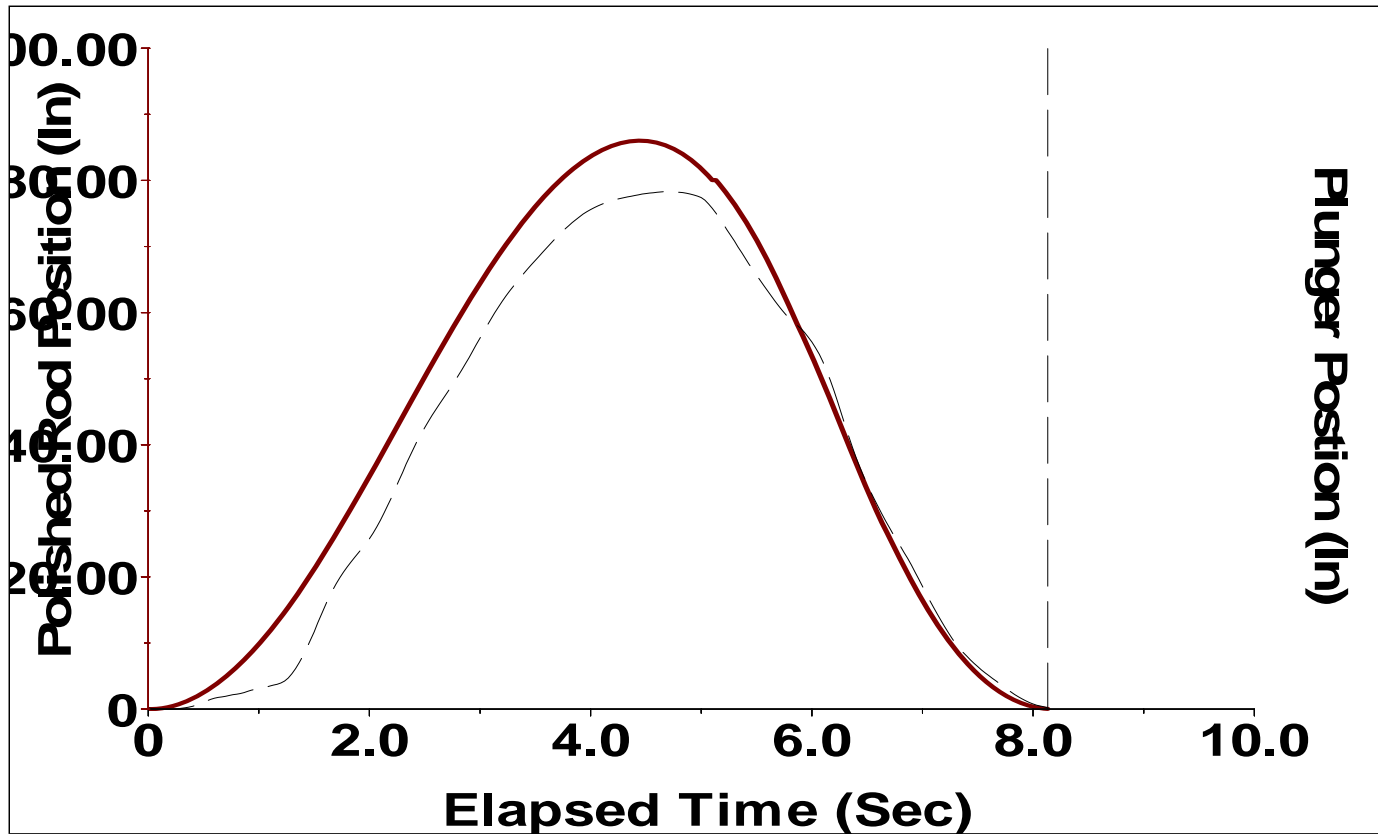
Service Factor	Top Taper C	Taper 2	Taper 3	Taper 4	Taper 5	Taper 6
1.0	80.5	- * -	- * -	- * -	- * -	- * -
0.85	93.0	- * -	- * -	- * -	- * -	- * -
0.60	125.6	- * -	- * -	- * -	- * -	- * -

Rod Stress kPa

	Top Taper C	Taper 2	Taper 3	Taper 4	Taper 5	Taper 6
Max	139149	- * -	- * -	- * -	- * -	- * -
Min	31537	- * -	- * -	- * -	- * -	- * -

Showing stroke 1 of 6

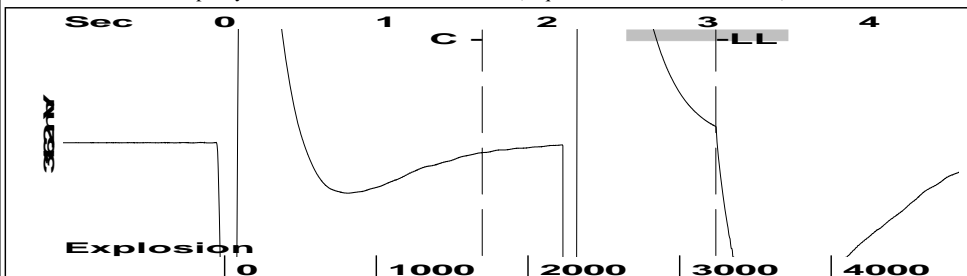




Left axis (solid) : 0.01 Polished Rod Position (In)

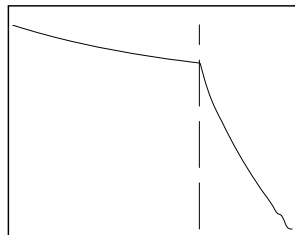
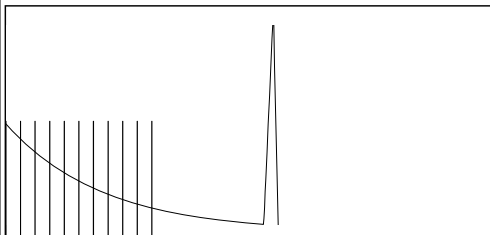
Right axis (dash) : 0.17 Plunger Postion (In)

Bottom axis : 8.13 Elapsed Time (Sec)

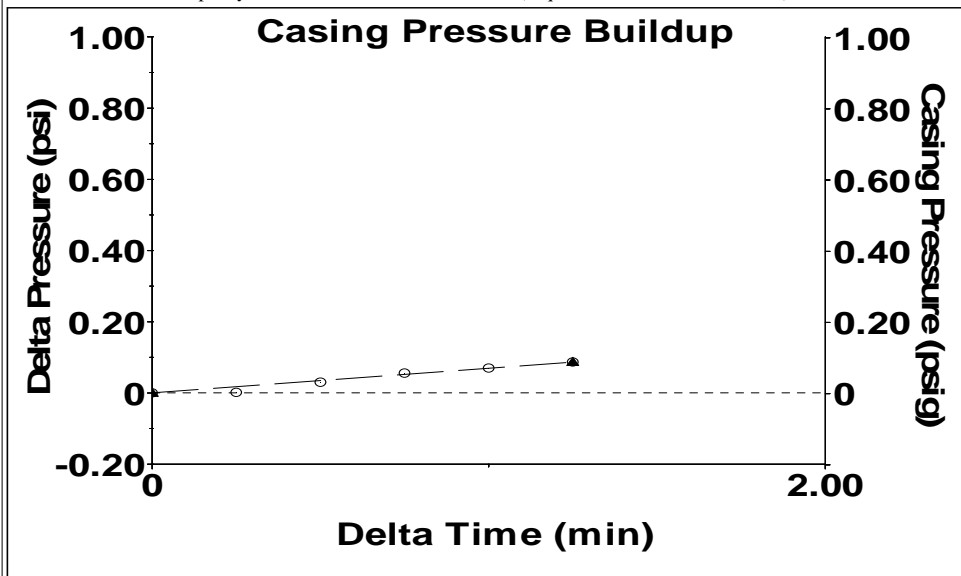


Filter Type High Pass Automatic Collar Count Yes Time 3.049 sec
 Manual Acoustic Velo 636.735 m/s Manual JTS/sec 33.3333 Joints 103.356 Jts
 Depth 987.15 m

[2.5 to 3.5 (Sec)]

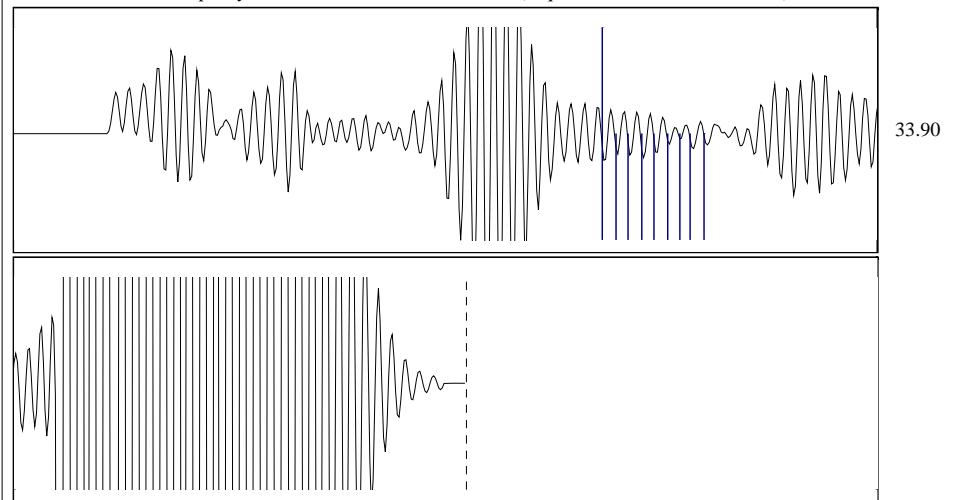


Analysis Method: Automatic

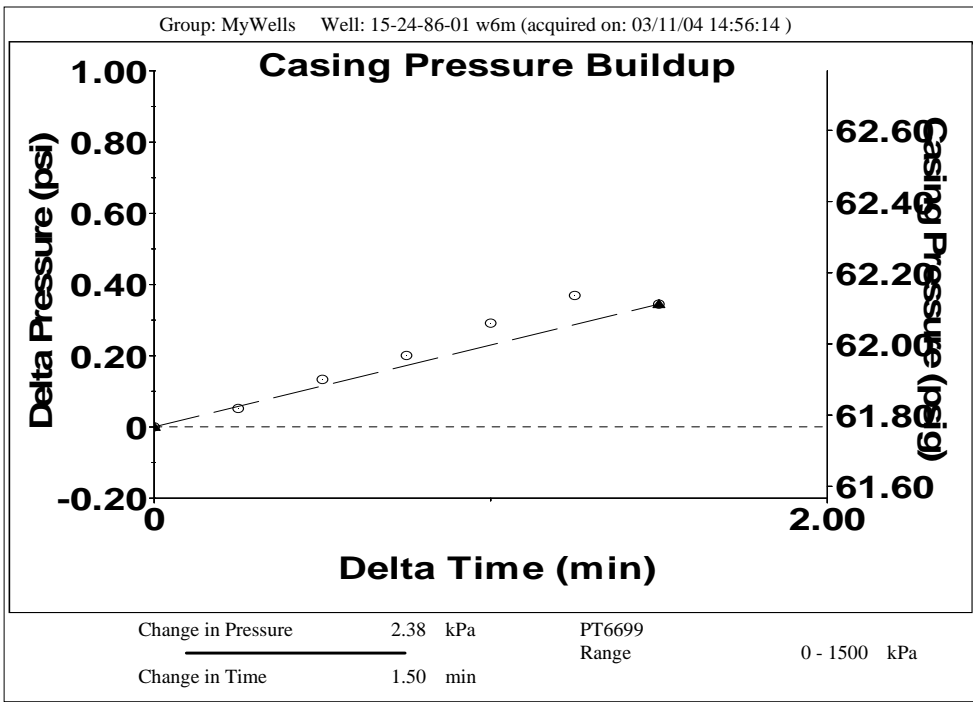
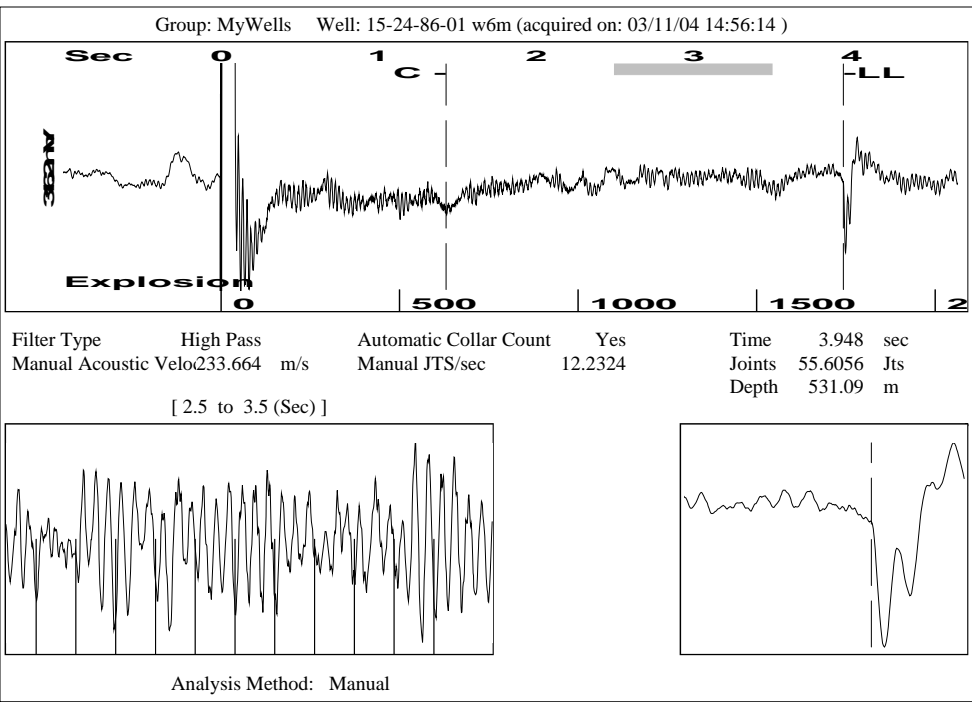


Change in Pressure 0.60 kPa PT6699
 Change in Time 1.25 min Range 0 - 1500 kPa

Production					
Current	Potential	Casing Pressure	Producing		
Oil 21	21.7 m ³ /D	0.0 kPa (g)			
Water 0.3	0.3 m ³ /D	Casing Pressure Buildup	Annular		
Gas 104.772	108.3 m ³ /D	0.6 kPa	Gas Flow		
		1.25 min	110 m ³ /D		
IPR Method	Vogel	Gas/Liquid Interface Pressure	%% Liquid		
PBHP/SBHP	0.11	6.2 kPa (g)	100 %		
Production Efficiency	96.7				
		Liquid Level			
Oi 0.825073 g/cm ³		Main Depth to Liquid Level			
Water 1.05 Sp.Gr.H2O		987.15 m			
Gas 0.55 Sp.Gr.AIR					
		Formation Depth			
Acoustic Velocity	647.527 m/s	845.94 m			
Pump Intake Depth (MD)	845.94 m	Pump Intake Pressure			
Total Gaseous Liquid Column HT (TVD)	0 m	6.2 kPa (g)			
Equivalent Gas Free Liquid HT (TVD)	0 m	Producing BHP			
		5.4 kPa (g)			
		Static BHP			
		850 kPa (g)			

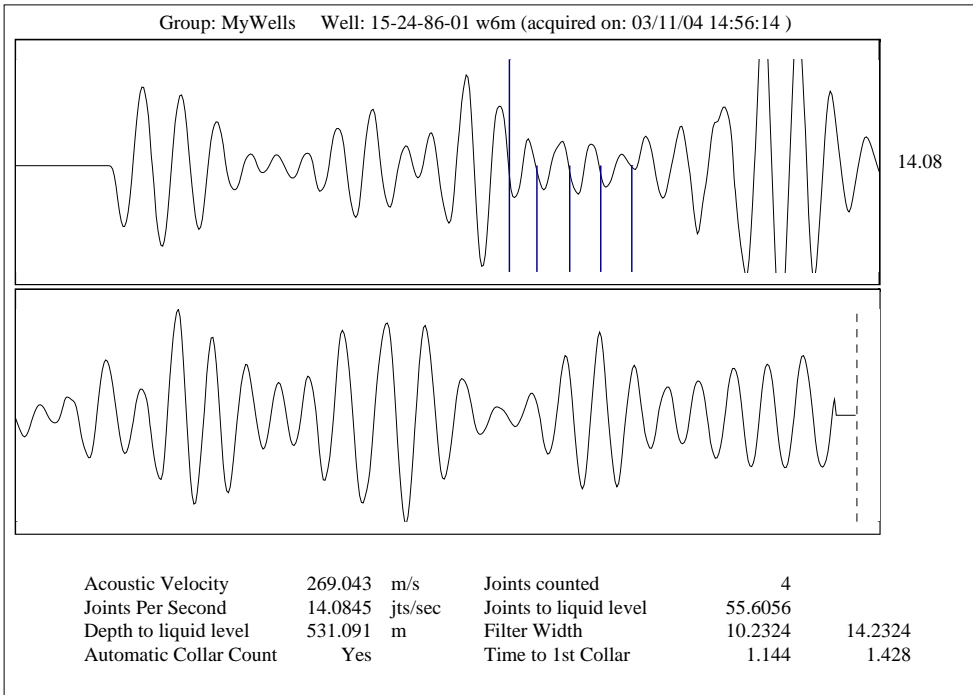


Acoustic Velocity 647.527 m/s Joints counted 8
 Joints Per Second 33.8983 jts/sec Joints to liquid level 103.356
 Depth to liquid level 987.155 m Filter Width 31.3333 35.3333
 Automatic Collar Count Yes Time to 1st Collar 1.364 1.6

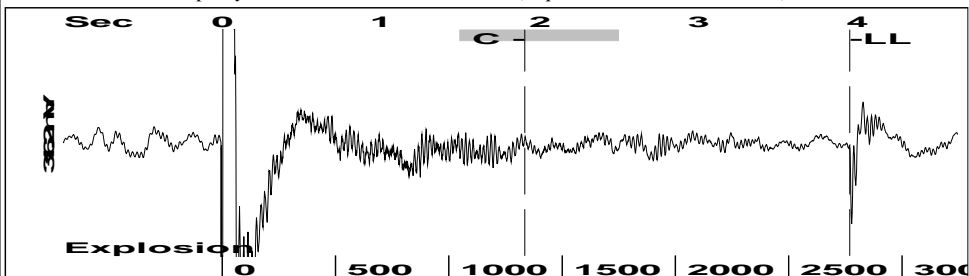


Group: MyWells Well: 15-24-86-01 w6m (acquired on: 03/11/04 14:56:14)

Production	Potential	Casing Pressure		Producing
Current	- * - m^3/D	425.9 kPa (g)		Annular Gas Flow
Oil 21	- * - m^3/D	Casing Pressure Buildup		301 m^3/D
Water 0.3	- * - m^3/D	0.6 kPa		% Liquid
Gas 104.772	- * - m^3/D	1.25 min		83 %
IPR Method	Vogel	Gas/Liquid Interface Pressure		
PBHP/SBHP	- * -	470.2 kPa (g)		
Production Efficiency	0.0	Liquid Level		
Oi 0.825073 g/cm^3		Main Depth to Liquid Level		
Water 1.05 Sp.Gr.H2O		531.09 m		
Gas 1.25 Sp.Gr.AIR		Formation Depth		
Acoustic Velocity	269.043 m/s	845.94 m		
Pump Intake Depth (MD)		845.94 m	Pump Intake Pressure	
Total Gaseous Liquid Column HT (TVD)		315 m	2480.2 kPa (g)	
Equivalent Gas Free Liquid HT (TVD)		263 m	Producing BHP	
			5.4 kPa (g)	
			Static BHP	
			850 kPa (g)	

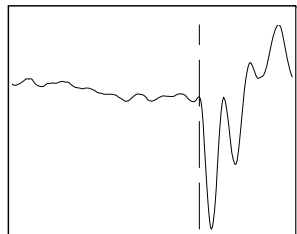
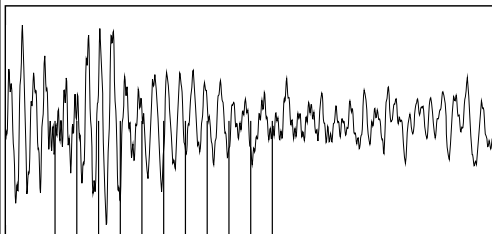


Group: MyWells Well: 15-24-86-01 w6m (acquired on: 03/11/04 14:59:33)



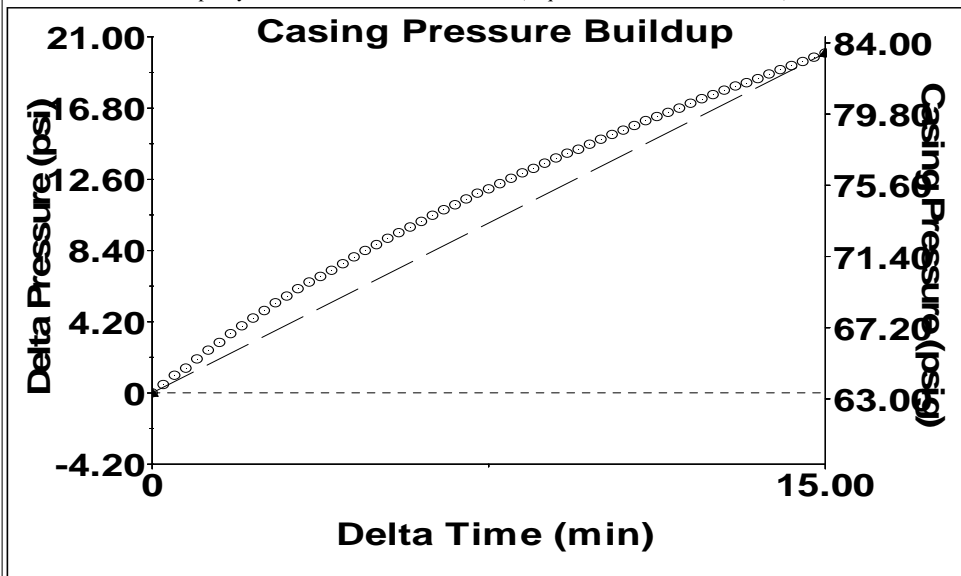
Filter Type High Pass Automatic Collar Count Yes Time 3.952 sec
 Manual Acoustic Velo 427.817 m/s Manual JTS/sec 22.3964 Joints 88.3577 Jts
 Depth 843.91 m

[1.5 to 2.5 (Sec)]



Analysis Method: Manual

Group: MyWells Well: 15-24-86-01 w6m (acquired on: 03/11/04 14:59:33)

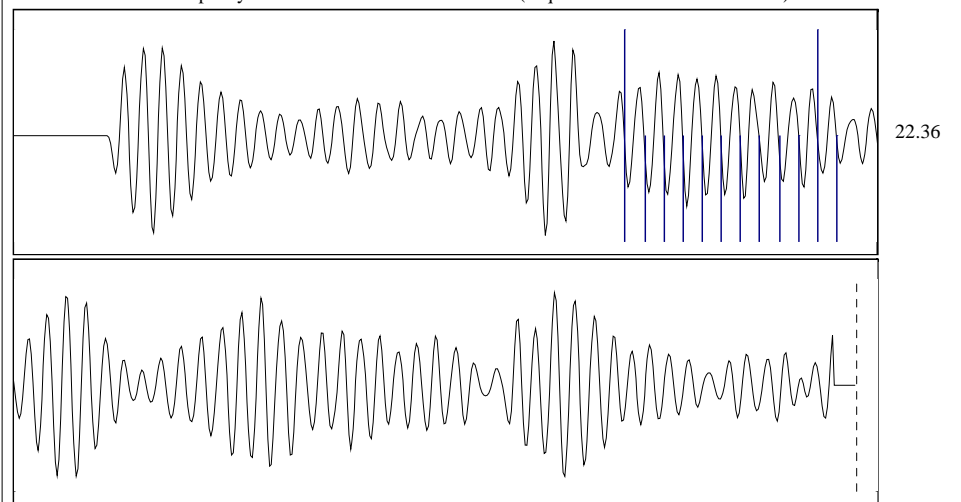


Change in Pressure 138.21 kPa PT6699
 Change in Time 15.00 min Range 0 - 1500 kPa

Group: MyWells Well: 15-24-86-01 w6m (acquired on: 03/11/04 14:59:33)

Production					
Current	Potential	Casing Pressure	Producing		
Oil 21	35.4 m ³ /D	436.8 kPa (g)			
Water 0.3	0.5 m ³ /D	Casing Pressure Buildup	Annular		
Gas 104.772	176.7 m ³ /D	0.6 kPa	Gas Flow		
		1.25 min	2171 m ³ /D		
IPR Method	Vogel	Gas/Liquid Interface Pressure	%% Liquid		
PBHP/SBHP	0.60	468.8 kPa (g)	100 %		
Production Efficiency	59.3				
		Liquid Level			
Oi 0.825073 g/cm ³		Main Depth to Liquid Level			
Water 1.05 Sp.Gr.H2O		843.91 m			
Gas 0.61 Sp.Gr.AIR		Formation Depth			
Acoustic Velocity	427.078 m/s	845.94 m			
Pump Intake Depth (MD)		845.94 m	Pump Intake Pressure		
Total Gaseous Liquid Column HT (TVD)		2 m	484.2 kPa (g)		
Equivalent Gas Free Liquid HT (TVD)		2 m	Producing BHP		
			5.4 kPa (g)		
			Static BHP		
			850 kPa (g)		

Group: MyWells Well: 15-24-86-01 w6m (acquired on: 03/11/04 14:59:33)



Acoustic Velocity 427.078 m/s Joints counted 11
 Joints Per Second 22.3577 jts/sec Joints to liquid level 88.3577
 Depth to liquid level 843.906 m Filter Width 20.3964 24.3964
 Automatic Collar Count Yes Time to 1st Collar 1.416 1.908

Oil Company abc Oil & Gas Co. Ltd.
 Well Name abc Hz Hickville 10-20
 Unique Identifier 100/10-20-080-02W6/00
 License # 02468
 AFE # 40103

Operator Code 0Z3N

(must include the following : LE / LSD-SEC-TWP-RGE W / ES)

Job Objective Reset pump at new depth
 Current Status Producing
 Start Date 07-Nov-03
 Finish Date 8-Nov-03

KB (m) 692.27
 GL (m) 687.09
 GE (m) 687.09
 KB-THF (m) 4.43
 TD (m) 1700.00
 PBTD (m) 1700.00
 TVD (m) 875.34
 CFE (m) 687.29
 KB-CF (m) 4.98

Max Inclination 93.1
 Max DLS 10.5

Casing - Surface	Size (mm)	244.5	Production (2)	Size (mm)	
	Weight (kg/m)	53.6		Weight (kg/m)	
	Grade	K-55		Grade	
	Depth (m)	188		Depth (m)	

Production	Size (mm)	177.8	Marker Joint	Size (mm)	
	Weight (kg/m)	34.2		Weight (kg/m)	
	Grade	J-55		Grade	
	Depth (m)	1033.5		Depth (m)	

Perforations	Zone	Interval (s) mKB	Status	SPM	Degrees	Date
	Montney	1033.45 - 1700.0	Producing	Open hole completion		21-Jul-03

Tubing String

Size (mm) 73
 Weight (kg/m) 9.67
 Grade J-55
 Make Stelpipe
 Range 2
 Thread EUE
 Collar API
 Condition Used & 20 jts New

Contacts

abc Willy Nilly Operator Code A0J0

Phone 403-777-1234
 fax 403-777-4321
 email Willy_Nilly@abc.ca
 home 403-999-9876
 Cell 403-888-8765

WELL SUMMARY SHEET

Supervisor	Jo Shmow	KB (m)	692.3	Date Started	07-Nov-03
Well	abc Hz Hickville 10-20	GE (m)	687.1	Date Finished	37933.0
Unique ID	100/10-20-080-02W6/00	CFE (m)	687.3	SPUD	
Licence #	02468	TD (m)	1700.0	RR	
Purpose of Job	Reset pump at new depth	PBTD (m)	1700.0	Max Inclination	93.1
Current Status	Producing	TVD (m)	875.3	Max DLS	10.5

Casing Details

Surface	Size (mm)	244.5	Weight (kg/m)	53.6	Grade	K-55	Depth (m)	188.0
Production	Size (mm)	177.8	Weight (kg/m)	34.2	Grade	J-55	Depth (m)	1033.5
Production	Size (mm)	0.0	Weight (kg/m)	0.0	Grade	0	Depth (m)	0.0
Marker Joint	Size (mm)	0.0	Weight (kg/m)	0.0	Grade	0	Depth (m)	0.0

Remarks: (ie: apparent cement top / cement quality)

Perforations

Zone	Interval (s)	Status	SPM	Degrees	Date
Montney	1033.45 - 1700.0	Producing	Open hole comp	0.00	21-Jul-03
0	0	0.00	0.00	0.00	00-Jan-00
0	0	0.00	0.00	0.00	00-Jan-00

Packers/Bridge Plugs/Misc. Downhole Equipment

Type	Depth	Remarks
Polar 177.8mm x 73.0mm tubing anchor. Shear - 24019daN	845.18	Set in 4000daN tension. String wt 8170daN. Wt on hanger 12170daN.
Dognut - 179.3mm x 73.0mm EUE CTC-1B s/n - 111279-07		

Tubing String Details (bottom up)

Size (mm)	73.0	Weight (kg/m)	9.67	Grade	J-55	Make	Stelpipe
				Length (m)	Depth mKB	Depth mTVD	Remarks
1	Bottom of re-entry guide						
2	1	73.0mm EUE Re-entry guide		0.13	847.55	820.17	
3	1	73.0mm, 9.67kg/m, J-55, EUE pup joint		1.20	846.22	818.84	
4	1	73.0mm EUE STL Pacific Hold down seating nipple		0.28	845.94	818.56	
5	1	177.8mm x 73.0mm EUE Polar tubing anchor		0.76	845.18	816.19	(SHEAR - 24019daN) Set in 4000daN tension
6	88	73.0mm, 9.67kg/m, J-55, EUE tubing joint		840.49	4.69	4.69	
7	1	73.0mm x 179.3mm dognut (minus tubing collar)		0.12	4.57	4.57	
8	Tubing tension			0.14	4.43	4.43	
9	KB to Tubing Hanger Flange			4.43			
10							
11	KOP - 644.71mKB. Horizontal - 1033mKB. TD - 1700mKB						
12							
13							

Bottom Hole Pump/Rod String Details

Pump Type	Insert 25-200-RWAMC-16-4	Serial #	TGS11	Manufacturer	Hart Gas Breaker
Polished Rod	31.8mm (1-1/4") x 7.925m (26') Spray Metal c/w 7/8" pins	Install Date	7-Nov-03	Max. Stroke	3.098m (122")
Components	Spray metal plunger, Crome plated barrel, API 3 cup hold down, Hart carbide travelling valve, Insert guided Tungsten Carbide standing valve				
Rod Count	Size (mm)	Guide/Scraper Description (type & #/rod)	Grade	Remarks	
31	19.05 (3/4")	2-7/8" AMODEL TORNADO 6 per rod	78	2-7/8" AMODEL TORNADO Guide/Scraper	
78	19.05 (3/4")	2-7/8" AMODEL 6 per rod	78	2-7/8" AMODEL Guide/Scraper	
4	19.05 (3.4")	8' (3 per rod), 6' (2 per rod), 4' (2 per rod), 2' (1 per rod)	78	2-7/8" AMODEL Guide/Scraper	

Logging Details (Cased hole)

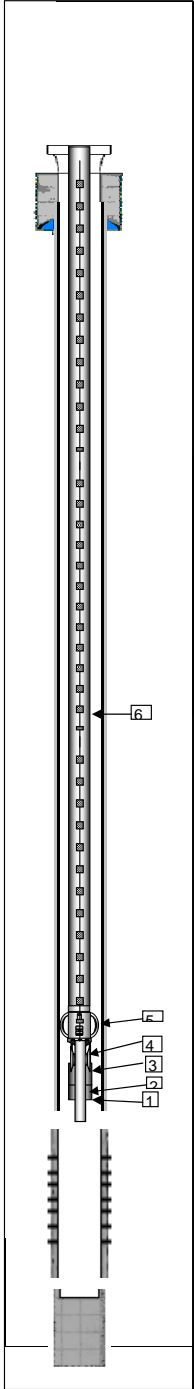
Logs	Type	Interval	Remarks

Wellhead Equipment

Make	Type	Size (mm) & WP (MPa)	Remarks (screwed/flanged)
Master Valve	Crown Model "A"	65mm, 35MPa, s/n 110358-01. NOTE: Valve has been removed & pumping wellhead installed	
Tubing Bonnet			
Tubing Spool	Crown type CTCM	279.4mm, 21MPa, R-53 btm x 179.3mm, 21MPa, R-45 top s/n 111573-29	
Tubing Hanger	CTC-1B	179.3mm x 73.0mm, EUE s/n 111279-07	
Casing Valve	Crown Model "A"	50.3mm, 35MPa, R-24, sweet trim s/n 111275-61	
Casing Valve	Crown Model "A"	50.3mm, 35MPa, R-24, sweet trim s/n 111275-78	
Casing Bowl	Crown type CTCM	244.5mm, SOW x 279.4mm, 21MPa, R-53 top s/n 109150-28	
Primary Seal			
Secondary Seal			
Wing Valve			
Slip			

Directions to location

From Dixonville travel West 21km on Hwy 689 to Smith Mill Road. South 3.2 km. West 1.6km to "T" intersection. West and South 3.7km on main road. South 1.6km into location.



WELL COMPLETION / WORKOVER REPORT

WELL NAME	abc Hz Hickville 10-20	REPORT #	1
UNIQUE ID	100/10-20-080-02W6/00	AFE#	40103
OBJECTIVE	Reset pump at new depth	DATE OF OPERATIONS	07-Nov
FORMATION(S)	Montney 0	DATE REPORTED	08-Nov
PERFORATIONS	1033.45 - 1700.0 0.00	TBG PRESS (kPa) @ 0800 HRS	350
OPER. @ 0800 HRS	Install horse head, return to production	CSG PRESS (kPa) @ 0800 HRS	400

TIME	DETAILED DESCRIPTION OF OPERATIONS	DAILY COST SUMMARY	
	<input checked="" type="checkbox"/> Daily Walk Around Inspection <input checked="" type="checkbox"/> Rig Emergency Kills <input type="checkbox"/> Safe Work Permit	ITEM	AMOUNT
	6 Nov 2003 - 18:00h - Move Concord 4 from 16-24-86-1W6 to 15-24-86-1W6. Spot equipment on location. Shut down for the night.	Chinchaga Ancho	\$ 963.00
		Total Oilfield	\$ 800.00
08:00	Held pre-job safety meeting with all personnel. Set anchors with Chinchaga Anchors. Shut down pump jack. Rig up service rig, rig tank & pump. Inspect rig. Remove horse head.	Quik Hotshot	\$ 960.00
	Held operation/safety meeting with rig crew.	Weatherford BMW	\$ 5 084.00
	Bleed off pressure from tubing and casing. Well is dead. Fill line with 0.5m3 produced oil and pressure test tubing to 5000kPa. Good test. Unseat pump. Tubing on vacuum and then dead. Remove polish rod, stuffing box and rod rotator. Pull pony rods and observe some mild wax build up on rod guides.	Weatherford BMW	\$ 5 609.00
	Pull out of hole with pump and rods. No visible damage to rods and guides.	Alberta Tubular	\$ 4 500.00
	Unload 25 joints 73.0mm EUE tubing from Tiger stock in Total Oilfield yard in Manning.	Concord	\$ 7 606.00
	Pump and rods on surface.		
	Unload insert pump s/n TGS11, 31 rods, rod collars, pony rod string, PSN, re-entry guide & Polar tubing anchor from Weatherford BMW in Grande Prairie. Return unused 73mm pup joints, 73mm collars & insert pump s/n TGS10 to Weatherford.		
14:00	Stump test BOP pipe rams, blind rams & annular preventer to 1400kPa low and 14000kPa high for 10 minutes each. Rig up BOP to pull tubing.		
	Pull out of hole with 73.0mm tubing and bottom hole assembly.		
	Casing started to flow/vent. Install stabbing valve in tubing and pump 2.5m3 produced oil down casing.		
15:15	Well died. Continue to pull out of hole with tubing.		
	Bottom hole assembly at surface. Inspect & function tubing anchor. OK. Make up and run in hole with 73.0mm EUE re-entry guide, 73.0mm x 1.2m, 9.67kg/m, EUE, J-55 pup joint, 73.0mm STLPacific Hold down nipple, 177.8mm x 73.0mm, EUE, Polar tubing anchor (Shear - 24019daN), 73.0mm, 9.67kg/m, EUE, J-55 tubing.		
17:30	Casing venting. Install stabbing valve and pump 3.0m3 produced oil down casing. Well died. Continue to run in hole with bottom hole assembly on 88 joints, 73.0mm, 9.67kg/m, EUE, J-55 tubing (includes 23 joints of new tubing). Set tubing anchor in 4000daN tension with top at 845.18mKB. Top of PSN 845.94mKB. Tubing bottom 847.55mKB. Land dognut. Strip off BOP. Install pumping wellhead and flow lines.		
	Rig up to run rods. Function test rod BOP. Pick up and stroke test insert pump s/n TGS11 with clean diesel. Hart Gas Breaker 25-200-RWAMC-16-4 top gas check.		
	Run in hole on 31 x 19.05mm Gr 78 scraped rods Amodel Tornado 6 per rod, 78 x 19.05mm Gr 78 scraped rods Amodel 6 per rod, Pony rods 8' (3 per rod), 6' (2 per rod), 4' (2 per rod), 2' (1 per rod). Install 31.8mm (1-1/4") x 7.925m (26') Spray Metal polish rod, stuffing box, lubricator and rod rotator.		
21:00	Find tap and clamp 3" off tap. Fill tubing with 0.5m3 produced oil. Pressure test tubing and pump to 5000kPa for 10 minutes. OK. Stroke test pump to 3500kPa for 10 minutes. OK.	Supervision	\$ 1 250.00
	Bleed off tubing pressure. Secure well and equipment.		
	Shut down for the night.	DAILY COST	\$ 26 772.00
		PREVIOUS	\$ -
Daily Rig Hours	13.5	Cummulative Rig Hours	13.5
		TOTAL COST	\$ 26 772.00

FINAL PRODUCTION STRINGS AND BOTTOM HOLE ASSEMBLIES IN POINT FORM

FLUID RECORD (m ³)	OIL	WATER	TOTAL	WEATHER AND ROAD CONDITIONS	
TOTAL FLUID TRUCKED IN (ti)	6.50		6.50	WEATHER	Clear & sunny
TOTAL FLUID TRUCKED OUT (to)	0.00		0.00	TEMP. (°C)	-14
CURRENT FLUID IN TANKS (ct)	0.00		0.00	ROAD / LEASE	Fresh snow, slippery
TOTAL LOAD FLUID	6.50		6.50	CONTACTS	
NON-RECOVERABLE FLUID (nr)	0.00		0.00	SUPERVISOR	Jo Shmow
RECOVERY LAST 24 HOURS (r24)	0.00		0.00	MOBILE	780-234-5678
RECOVERED TO DATE (rtcd)	0.00		0.00	CONTRACTOR	abc
LOAD TO RECOVER (tif-nr-rtcd)	6.50	0.00	6.50	REPORT TO	Willy Nilly

BALANCE FLUID VOLUMES ON A DAILY BASIS

REMARKS

IE: MATERIAL AND FLUID TRANSFERS (INCLUDING TRUCKING TICKET NO'S) DETAILS, EQUIPMENT CONDITION ETC.

WELL COMPLETION / WORKOVER REPORT

WELL NAME	abc Hz Hickville 10-20	REPORT #	2
UNIQUE ID	100/10-20-080-02W6/00	AFE#	40103
OBJECTIVE	Reset pump at new depth	DATE OF OPERATIONS	8-Nov-03
FORMATION(S)	Montney 0	DATE REPORTED	9-Nov-03
PERFORATIONS	1033.45 - 1700.0 0.00	TBG PRESS (kPa) @ 0800 HRS	n/a
OPER. @ 0800 HRS	Returned to production.	CSG PRESS (kPa) @ 0800 HRS	TSTM

TIME	DETAILED DESCRIPTION OF OPERATIONS	DAILY COST SUMMARY	
		ITEM	AMOUNT
	<input checked="" type="checkbox"/> Daily Walk Around Inspection <input checked="" type="checkbox"/> Rig Emergency Kills <input type="checkbox"/> Safe Work Permit		
07:30	Service and start equipment. Held safety meeting with all personnel on location. Install horse head. Rig out service rig and equipment. Remove safety chain from pumpjack and install guards. Turn well over to production operator. Clean up wellsite. Not enough casing gas to run the pumpjack. Rig crew rigged up 20 lb propane bottles and hose to run the jack temporarily. Monitor well to make sure the pump keeps operating. Separator froze up and oil diverted to the flare stack. Bypass the separator and flow directly to the production tanks. Call in steamer and vacuum truck to thaw out separator. Rig crew released back to Grande Prairie at 12:00h. Move in Total picker truck to move 1000gal propane tank. Spotted tank between the wells on location so both wells could be operated from the same source if required. Loaded and hauled 2 joints 73mm, 9.67kg/m, J-55 tubing & 5 sucker rods Gr 78 Amodel 6 per, to Total Oilfield yard in Manning. Loaded pony rod string, unused tubing anchor & Concord propane bottles to be returned to Grande Prairie for credit. Steamer and vacuum truck thawed out and cleaned up location.	Concord \$ 5 399.00 Total Oilfield \$ 1 125.00 Bouchard Vac \$ 1 294.00 Spice Steamer \$ 595.00	
17:30	Job complete. Well returned to production.		
		Supervision \$ 1 250.00	
		DAILY COST \$ 9 663.00	
		PREVIOUS \$ 26 772.00	
Daily Rig Hours	9.5	Cummulative Rig Hours	23
		TOTAL COST	\$ 36 435.00

FINAL PRODUCTION STRINGS AND BOTTOM HOLE ASSEMBLIES IN POINT FORM

FLUID RECORD (m³)	OIL	WATER	TOTAL	WEATHER AND ROAD CONDITIONS	
TOTAL FLUID TRUCKED IN (ti)	6.50		6.50	WEATHER	Clear
TOTAL FLUID TRUCKED OUT (to)	0.00		0.00	TEMP. (°C)	-8
CURRENT FLUID IN TANKS (ct)	0.00		0.00	ROAD / LEASE	Snow covered, slippery
TOTAL LOAD FLUID	6.50		6.50	CONTACTS	
NON-RECOVERABLE FLUID (nr)	0.00		0.00	SUPERVISOR	Jo Shmow
RECOVERY LAST 24 HOURS (r24)	0.00		0.00	MOBILE	780-234-5678
RECOVERED TO DATE (rtd)	0.00		0.00	CONTRACTOR	abc
LOAD TO RECOVER (tif-nr-rtd)	6.50	0.00	6.50	REPORT TO	Willy Nilly

BALANCE FLUID VOLUMES ON A DAILY BASIS

REMARKS

Kill fluid was taken from production tanks on location. Tanks contain Montney crude oil.
--